



## PRODUCTS

Our range of supply for the field of ready-mix concrete comprises of:

- augers/ screws
- chutes
- components for crushing machines
- components for sand blasting equipment
- conveyor components
- fan blades
- funnel and funnel sheets
- mixer linings (bottom and walls)
- pipes and elbow pipes
- piping components
- polyurethane plates
- pump housing
- rotary feeder
- sieve plates
- swords
- tear-off edge
- wear plates
- wear surfaces for rollers
- wheel loader mouldings

We also have suitable welding and filling electrodes in our range of supply. Of course we can also support and assist you with repairs and modifications.

Please do not hesitate to ask us!

### Is your required product not listed here?

We manufacture individually as per your requirements, please contact us. We would be happy to give advice to you!

Fon: +49 (0)2161 / 92790-0  
Fax: +49 (0)2161 / 92790-99  
Mail: [vertrieb@contex-gmbh.net](mailto:vertrieb@contex-gmbh.net)  
Web: [www.contex-gmbh.net](http://www.contex-gmbh.net)

CONTEX  
HARTMETALL  
VERSCHLEISSTECHNIK  
GMBH

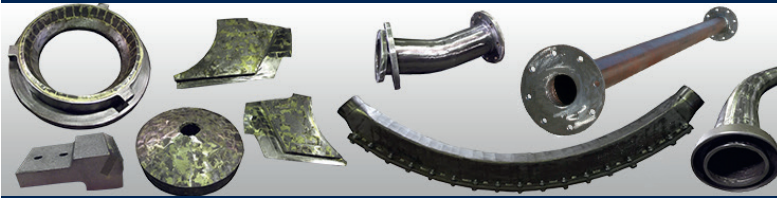
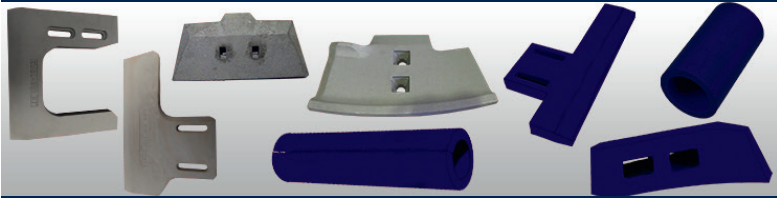
Krefelder Straße 676  
41066 Mönchengladbach  
Germany

Fon: +49 (0)2161 / 92790-0  
Fax: +49 (0)2161 / 92790-99

Mail: [vertrieb@contex-gmbh.net](mailto:vertrieb@contex-gmbh.net)  
Web: [www.contex-gmbh.net](http://www.contex-gmbh.net)

## BULK SOLIDS





Range of Products

## PRODUCTION MATERIALS

Individual choice of material custom-made for your requirements.

The right material for your application:

- **Tungsten Carbide**

Our tungsten carbide is a compound material comprising of more than 90 % tungsten carbide in combination with a metallic matrix. Tungsten carbide is being pressed and sintered to give the material its hardness as well as its wear and corrosion resistance. We offer a range of products made completely of tungsten carbide or with a special tungsten carbide coating.

Also available in different qualities:

- CAR = Contex Abrasive Resistant Tungsten Carbide
- CIR = Contex Impact Resistant Tungsten Carbide
- CMS = Contex Mining Special Tungsten Carbide
- CSR = Contex Stick Resistant Tungsten Carbide

- **Hard Cast Tex-Cast**

Hard cast is a cast iron alloy with a high contents of carbide. Hard cast is highly abrasion resistant.

- **Alphachrome 7000 (Sandwich Type Steel)**

Alphachrome 7000 ist eine High-Chrome-Carbide-Alloy for machinery parts subjected to high mineral wear (e.g. fine dust). Due to its high chrome contents Alphachrome is extremely wear resistant.

- **Betachrome BC70**

Betachrome BC70 is a work hardened layered material with a hardness of approx. 64 HRC. This alloy is particularly resistant to high impact and abrasion.

- **SX600**

SX600 is a special steel with a tensile strength of up to 600 Newton. Its advantage in comparison to standard steel is its higher wear resistance.

- **CX6000**

CX6000 is a martensitic steel with a hardness of up to 550 HB. Its hard microcarbides render this material its exceptional wear resistance.

- **Polyurethane Tex-Tha**

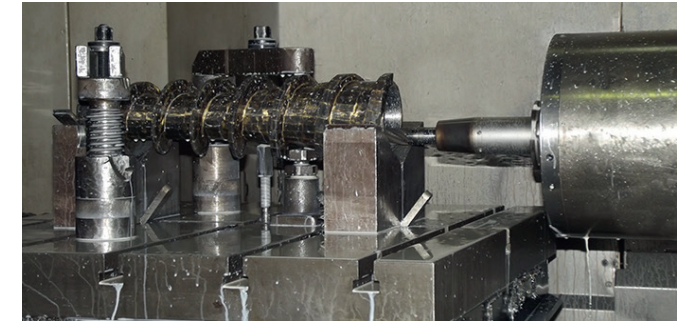
Polyurethane is a special synthetic material that is characterized by high wear resistance due to its texture. We use polyurethane in the hardness range from 30 up to 95 Shore A.

We would be pleased to personally discuss which material is best suitable for your requirements.

## PRODUCTION MACHINERY

We carry out all individual production steps at our production facilities in Mönchengladbachs, from construction to final product, i.e.:

- Chip removal
- Welding
- Warping
- Grinding
- Laser Cutting
- Brazing
- Steel Construction
- Assembling



THE WEAR PROTECTION MANUFACTORY